



# HARDWARE: DISPLAY SCREENS

QSR Solutions

# Kitchen Armor

## Android AIO 15.6"



The Kitchen Armor PCAP **Android All-in-One** features Power Over Ethernet (POE) capability, so you save on electrical outlets and keep your kitchen stations clean and cordless.

Encased in lightweight steel and built for demanding restaurant environments, this sleek touchscreen monitor will help you craft smart workflows for years to come.

### FEATURE SPECIFICATION

<b>Material</b>	2 mm strengthen glass
<b>Active Display Area</b>	13.55" x 7.62" / 344.16 mm x 193.59 mm
<b>Diagonal</b>	15.6"
<b>Aspect Ratio</b>	16:9
<b>Dimensions</b>	15.44" x 9.63" x 1.63" / 392.18 mm x 244.60 mm x 41.40 mm
<b>Weight</b>	8.45 lbs / 3.83 kgs
<b>Native Resolution</b>	1920 x 1080 at 60Hz
<b>Color Depth</b>	262 K
<b>Touch</b>	PCAP   Resolution: 4096 x 4096   # of Touches: 10-Touch   Accuracy: 2mm   Response Time: 10 msec
<b>Input Method</b>	Finger, Touch Pen, Gloved Hand
<b>CPU</b>	Rk3288
<b>Memory</b>	2G
<b>Storage</b>	8G
<b>Operating system</b>	Android 7.1.2
<b>Networking</b>	10/100 Ethernet LAN
<b>Brightness (typical)</b>	215 nits
<b>Response (typical)</b>	30 msec
<b>Viewing Angle</b>	Horizontal: 85 or 170 total; Vertical: 85 or 170 total
<b>Contrast Ratio</b>	800:1
<b>Light Transmission</b>	86%
<b>Power Supply</b>	POE+ / External 12V DC Power Adapter
<b>Temperature</b>	Operating: 0°C to 40°C (32°F to 104°F); Storage: -20°C to 60°C (-4°F to 140°F)
<b>Humidity</b>	Operating: 20% to 80%; Storage: 10% to 90%
<b>Mounting Options</b>	100 mm VESA mount
<b>IP</b>	IP 65
<b>Certifications</b>	CE, FCC
<b>Warranty</b>	1 year

All specifications are subject to change without notice. Please check with your supplier for exact offers. Products may not be available in all markets. Specifications and features vary by model, and all images are illustrative. PCB color and bundled software versions are subject to change without notice. Brand and product names mentioned are trademarks of their respective companies.

# Kitchen Armor

## Android AIO 21.5"



The Kitchen Armor PCAP **Android All-in-One** features Power Over Ethernet (POE) capability, so you save on electrical outlets and keep your kitchen stations clean and cordless.

Encased in lightweight steel and built for demanding restaurant environments, this sleek touchscreen monitor will help you craft smart workflows for years to come.

### FEATURE SPECIFICATION

<b>Material</b>	Stainless Steel, 3.0mm strengthen glass
<b>Active Display Area</b>	18.77" x 10.56" / 476.64mm x 268.11 mm
<b>Diagonal</b>	21.5"
<b>Aspect Ratio</b>	16:9
<b>Dimensions</b>	20.83" x 12.6" x 1.94" / 529mm x 320mm x 49.2mm
<b>Weight</b>	16.3 lbs / 7.39 kgs
<b>Native Resolution</b>	1920 x 1080 at 60Hz
<b>Color Depth</b>	16.7 million
<b>Touch</b>	PCAP   Resolution: 4096 x 4096   # of Touches: 10-Touch   Accuracy: 2mm   Response Time: 10 msec
<b>Input Method</b>	Finger, Touch Pen, Gloved Hand
<b>CPU</b>	RK3399
<b>Memory</b>	4G
<b>Storage</b>	16G
<b>Operating system</b>	Android
<b>Networking</b>	10/100 Ethernet LAN
<b>Brightness (typical)</b>	250 nits
<b>Response (typical)</b>	10 msec
<b>Viewing Angle</b>	Horizontal: 89° or 178° total; Vertical: 89° or 178° total
<b>Contrast Ratio</b>	3000:1
<b>Light Transmission</b>	86%
<b>Power Supply</b>	POE+ / External 12V DC Power Adapter
<b>Temperature</b>	Operating: 0°C to 40°C (32°F to 104°F); Storage: -20°C to 60°C (-4°F to 140°F)
<b>Humidity</b>	Operating: 20% to 80%; Storage: 10% to 90%
<b>Mounting Options</b>	100 mm VESA mount
<b>IP</b>	IP 65 Front Side, IP67 Industrial RJ45 jack available (POE only)
<b>Certifications</b>	CE, FCC
<b>Warranty</b>	1 year

All specifications are subject to change without notice. Please check with your supplier for exact offers. Products may not be available in all markets. Specifications and features vary by model, and all images are illustrative. PCB color and bundled software versions are subject to change without notice. Brand and product names mentioned are trademarks of their respective companies.

# ELO Windows AIO 22"

Elo's I-Series for Windows delivers commercial-grade computing with the capabilities, security and enterprise infrastructure of a powerful, Windows-based platform—all in a sleek, yet durable fixed tablet form factor.



## FEATURE SPECIFICATION

<b>Operating System</b>	Windows 10 IoT
<b>Processor</b>	Intel® Celeron® J4105 Processor (4M Cache, up to 2.5 GHz)
<b>Memory</b>	Celeron: 4GB 2666MHz DDR4 SO-DIMM on 1 of 2 slots (Expandable to 8GB maximum on 2 slots)
<b>Storage</b>	128GB M.2 SATA SSD 72 TBW
<b>Speakers</b>	2 x 2 internal speakers
<b>I/O Ports</b>	1 x LAN RJ45 (Gigabit), 1 x USB 3.0, 4 x Micro USB 2.0 on edges for optional Elo Edge Connect peripherals
<b>Wireless</b>	Wi-Fi 802.11 a/b/g/n/ac 2.4GHz and 5GHz
<b>Touch Technology</b>	PCAP (TouchPro® Projected Capacitive) - 10 Touch
<b>Brightness</b>	LCD panel: 250 nits; TouchPro PCAP: 225 nits
<b>Response Time</b>	14 ms
<b>Contrast Ratio</b>	1000:1
<b>Power</b>	External USB-C power supply brick, AC input voltage: 100-240 VAC, Input frequency: 50-60 Hz
<b>Aspect Ratio</b>	16:9
<b>Dimensions (W x D x H)</b>	20.7" x 12.57" x 2.07"
<b>Weight</b>	Packaged: 15.4 lbs / 7 kg Unpackaged: 11.5 lbs / 5.2 kg
<b>Temperature</b>	Operating: 0°C to 35°C / 32°F to 95°F; Storage: -20°C to 60°C / -4°F to 140°F
<b>Mounting Options</b>	75mm or 100mm VESA mountb
<b>Warrant</b>	3 years standard
<b>Regulatory Approvals</b>	UL/cUL, FCC, TUV, CE, CB, Mexico NOM, C-Tick/RCM, VCCI, Argentina S-Mark, CCC

All specifications are subject to change without notice. Please check with your supplier for exact offers. Products may not be available in all markets. Specifications and features vary by model, and all images are illustrative. PCB color and bundled software versions are subject to change without notice. Brand and product names mentioned are trademarks of their respective companies.

# ELO Android AIO 22"

The Elo I-Series 3.0 Android All-in-One is a reliable solution that features Power Over Ethernet (POE) capability and flexible design for various screen orientations. Built to hold after constant use in harsh environments, this all-in-one monitor will seamlessly optimize any kitchen workflow.



## FEATURE SPECIFICATION

<b>Operating System</b>	Android™ 8.1
<b>Processor</b>	Qualcomm® Snapdragon™ APQ8053 2.0GHz octa-core Processor
<b>Memory</b>	3GB DDR3L
<b>Storage</b>	32GB SSD
<b>Speakers</b>	TWO 2W stereo internal
<b>I/O Ports</b>	Micro HDMI output, Micro SD slot, Ethernet 1x LAN (Gigabit), GPIO, 1x USB 3.0, 4x microUSB
<b>Wireless</b>	802.11 b/g/n/ac + Bluetooth 4.1
<b>Touch Technology</b>	TouchPro® PCAP (Projected Capacitive) - up to 10 touches
<b>No. of Colors</b>	6-bit (Hi-FRC; 16.7M)
<b>Brightness</b>	LCD Panel 250 nits; PCAP: 215 nits
<b>Response Time</b>	14 ms
<b>Contrast Ratio</b>	1000:1
<b>Power</b>	AC input voltage: 100-240 VAC; Input frequency: 50-60 Hz
<b>Aspect Ratio</b>	16:9
<b>Dimensions (W x D x H)</b>	20.63" x 12.75" x 1.39" (523.9mm x 323.9mm x 35.2mm)
<b>Weight</b>	Unpackaged: 9.47 lbs (4.3 kg) Packaged: 16.10 lbs (7.30 kg)
<b>Temperature</b>	Operating: 32°F to 104°F (0°C to 40°C); Storage: -4°F to 122°F (-20°C to 50°C)
<b>Mounting Options</b>	100mm or 100mm VESA mount
<b>Peripheral Mounting</b>	4x microUSB side ports available
<b>Warrant</b>	2 years standard
<b>Regulatory Approvals</b>	UL/cUL (US), IC (Canada), CE (Europe), CB (International), CCC, SRRC China RoHS (China), VCCI, MIC (Japan), RCM (Australia), KCC (Korea), NOM (Mexico), BIS (India), ANATEL (Brazil), BSMI (Taiwan), EAC (Russia)

All specifications are subject to change without notice. Please check with your supplier for exact offers. Products may not be available in all markets. Specifications and features vary by model, and all images are illustrative. PCB color and bundled software versions are subject to change without notice. Brand and product names mentioned are trademarks of their respective companies.

# ASUS V161 15.6" AIO

ASUS V161 All-in-One PC features a 15.6-inch 16:9 LED-backlit display that ensures crystal-clear images and reduced power consumption.

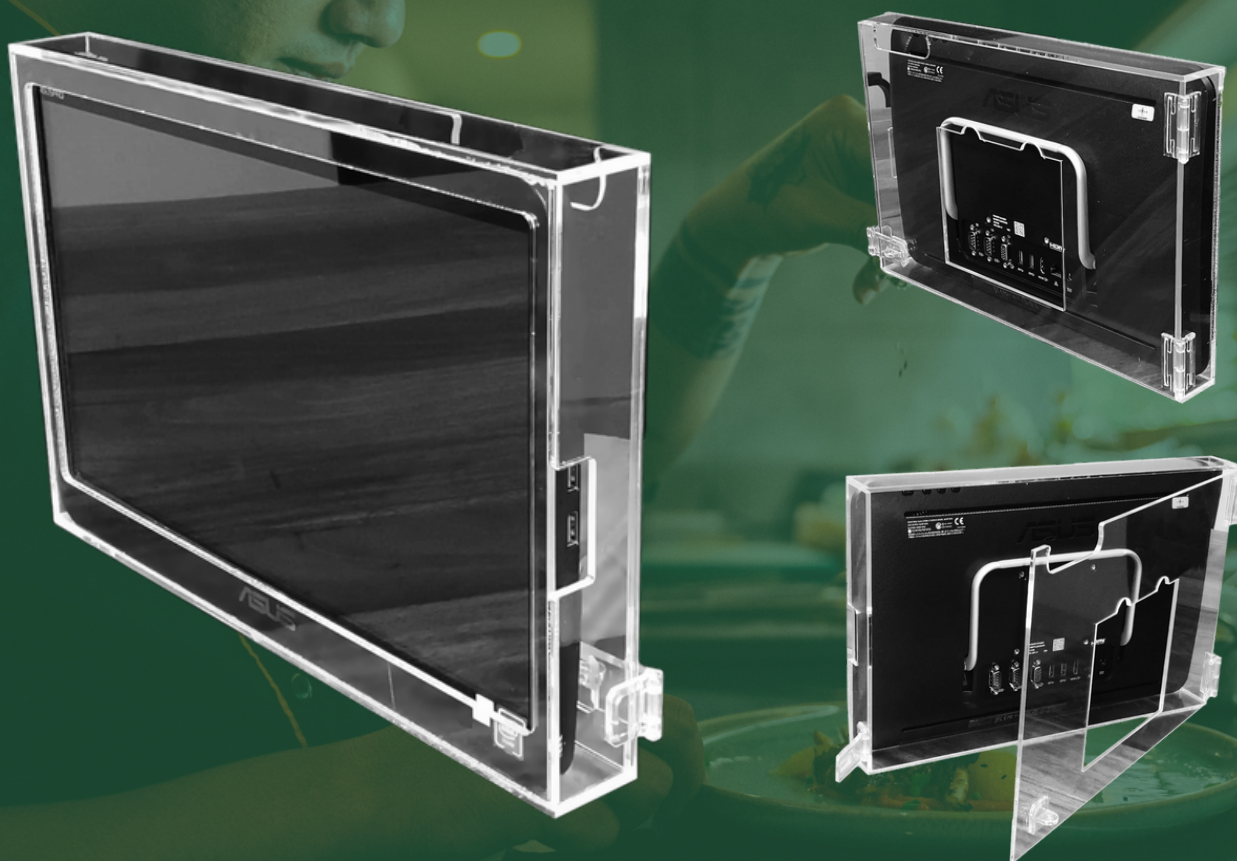
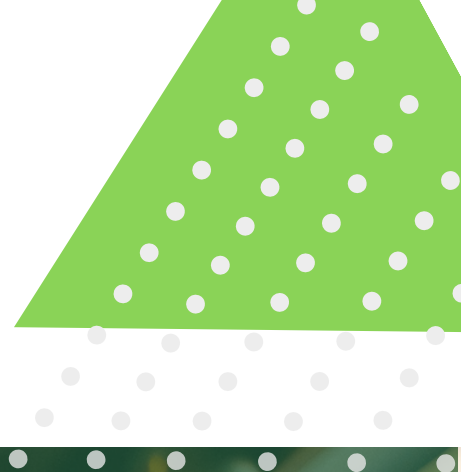


## FEATURE SPECIFICATION

<b>Color</b>	Black/ White
<b>Operating System</b>	Endless Windows 10 Home   Windows 10 Pro Windows 11 Home   Windows 11 Pro
<b>Processor</b>	Intel® Celeron® N4000 Processor 1.1 GHz (4M Cache, up to 2.6 GHz, 2 cores) Intel® Celeron® N4100 Processor 1.1 GHz (4M Cache, up to 2.4 GHz, 4 cores) Intel® Pentium® Silver N5000 Processor (4M Cache, up to 2.7GHz, 4 cores) Intel® Celeron® N4020 Processor 1.1 GHz (4M Cache, up to 2.8 GHz, 2 cores)
<b>Display</b>	Touch screen, 15.6-inch, HD (1366 x 768) 16:9, Glossy display, LED Backlit, 200nits, NTSC: 45%
<b>Memory</b>	4GB DDR4 SO-DIMM   8GB DDR4 SO-DIMM
<b>Storage</b>	500GB SATA 5400RPM 2.5" HDD 128GB SATA 2.5" SSD 256GB SATA 2.5" SSD 1TB SATA 5400RPM 2.5" HDD
<b>Side I/O Ports</b>	1x Kensington lock   1x Headphone out   1x MIC-in   1x 6-in-1 card reader SD / SDHC / SDXC / MS / MS Pro / MMC   2x USB 3.2 Gen 1 Type-A
<b>Rear I/O Ports</b>	2x COM port   1x VGA Port (D-Sub)   1x DC-in   1x RJ45 Gigabit Ethernet   1x HDMI out 1.4   2x USB 3.2 Gen 1 Type-A
<b>Camera Audio</b>	720p HD camera   Without camera Built-in microphone
<b>Network and Communication</b>	Wi-Fi 5(802.11ac) (Dual band) 1*1 + Bluetooth 4.1 Wi-Fi 5(802.11ac) (Dual band) 2*2 + BT5.0 – Gigabit WiFi Wi-Fi 4(802.11bgn) (Single band) 1*1 + Bluetooth 4.0
<b>Power Supply</b>	ø5.5, 45W AC Adapter, Output: 19V DC, 2.37A, 45W, Input: 100~240V AC 50/60Hz universal   ø5.5, 65W AC Adapter, Output: 19V DC, 3.42A, 65W, Input: 100~240V AC 50/60Hz universal
<b>Weight</b>	02.00 kg (4.41 lbs)
<b>Dimensions</b>	37.8 x 24.7 x 2.9 ~ 10.5 cm (14.88" x 9.72" x 1.14" ~ 4.13")
<b>Temperature</b>	Cope with extremes of dry, icy -30°C to hot and humid 60°C
<b>Security</b>	BIOS Booting User Password Protection   HDD User Password Protection and Security McAfee LiveSafe™ 30-day trial   Kensington Security Slot™   Trusted Platform Module (Firmware TPM)
<b>Mounting Options</b>	Wallmount screws (45mm/ 66mm)
<b>Regulatory Compliance</b>	Energy star
<b>Certificate</b>	CE
<b>Warranty</b>	1 year

All specifications are subject to change without notice. Please check with your supplier for exact offers. Products may not be available in all markets. Specifications and features vary by model, and all images are illustrative. PCB color and bundled software versions are subject to change without notice. Brand and product names mentioned are trademarks of their respective companies.

# ASUS V161 15.6" AIO PROTECTIVE COVER



## FEATURE SPECIFICATION

**Item Code** ASC15/6

**Description** 15.6" Asus V161 Perspex Protective Screen Enclosure

**Dimensions** 38cm x 25.5cm x 4.5cm  
(L x H x W)



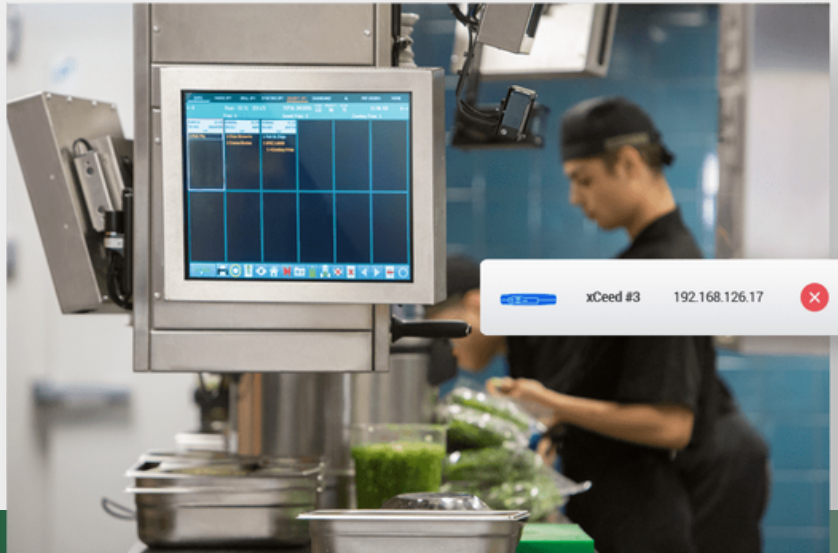
# KITCHEN DISPLAY CONTROLLERS

**QSR Solutions**

# Hardware

QSR has led the industry for over 25 years in providing reliable and flexible kitchen display controllers. Whether you operate table service, quick service or fast-casual, bar, concession, or pizza restaurant concepts, we have hardware and an operating system to match. Our hardware solutions are durable, reliable and remain functional in the heat and rigor of the kitchen.

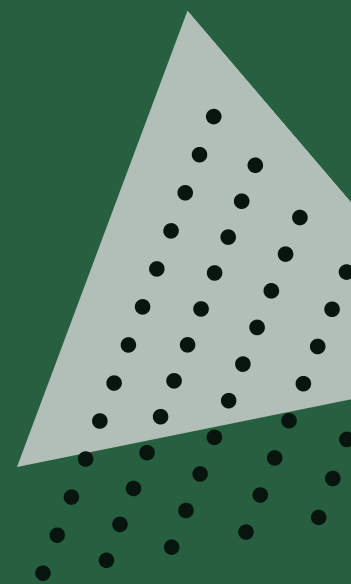
**Flexible and easy to implement, our hardware functions with each of our software solutions like ConnectSmart Host and ConnectSmart Kitchen.**



# ControlPoint

ControlPoint connects and manages your restaurant's hardware and software, offering real-time diagnostics and updates.

Though it's designed to manage QSR's solutions, it will also effectively manage third-party systems, including point-of-sale terminals.





## HP Thin Client

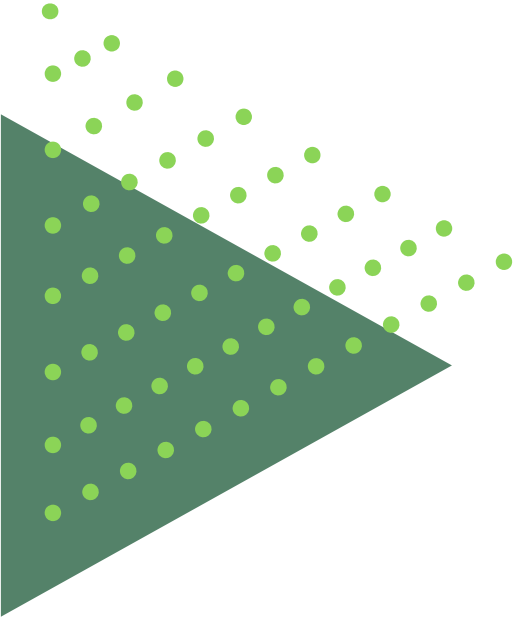
Custom-tailored for QSR's Server-based applications, the HP t640 Thin Client offers flexible connectivity to maximize your restaurant front to back. With industrial-grade VESA mounts, high-speed responsive system memory, and industry-leading data encryption and redundancies, you can boldly accomplish any restaurant initiative with ease.

COMING SOON

## Elo Backpack



QSR has collaborated with our long-time strategic partner Elo to offer the Elo Backpack®. Elo is a best-of-breed hardware solutions provider, known for quality, reliability, and innovation. The Elo Backpack Value Model is a powerful commercial-grade compute engine with an Android 10 operating system. It features a rockchip processor, offering more speed and stability, critical components of what you want in your restaurant environment.



**MP9**



The MP9 controller is a flexible solution that will run your restaurant software, from the back office to the restaurant floor, and everywhere in between. A compact, high-performance controller that runs Microsoft®'s Windows® IOT 10 operating system, the MP9 is optimized to run all the server applications for ConnectSmart® Kitchen, Host, and ControlPoint.

## Features

- Customized OS to support all ConnectSmart applications
- 6 USB ports, multi-media support, ethernet and wireless and multiple video outputs
- 8GB DDR4 RAM, Intel Core i3, 3.1 GHz

# Testimonials



“ There is just no way we could've sold 120 restaurants if we were still doing paper checks. I'd hate to see where we would be without CSK. Life would be drastically different! ”

**Keegan Lanier**  
**Director of Operations, Walk-On's Bistreaux & Bar**



“ If we removed the CSK system from the kitchen, I think we'd struggle. Everyone's job would become harder, and our whole service would slow down. What CSK has done has completely revolutionized what we're doing in the kitchen, and in the industry as a whole. ”

**David Darnborough**  
**Head Chef, The Darwin Brasserie (UK)**



“ We've completed a national implementation of CSK, a system that automates our cook time processes. The result will be an annualized savings of \$5 million, from labor reduction. ”

**Chief Financial Officer,**  
**The Cheesecake Factory (USA)**



“ The ConnectSmart system has had a huge impact .... It has made every area of our operation more efficient, from the kitchen to the front of house. Our customer service is better. Our table turns are up 30 to 40 per cent. Food quality is excellent. We're getting the numbers of covers without feeling the pain. Our staff are happier and so are our customers. Plus, it's helped us increase our sales by about £2,000 per week. ”

**Director, Dishoom (UK)**

